



Pressure Water temperature Controllers **Type 140E 6/12E, 140E 20/40/60E,** **160E 6/12E, 180E 20/40P**

New range !



The range of pressurized water controllers differentiates itself by its robustness with the integration of top performing components. This new generation bring simple daily use to the shop floor. These systems offer a wide range of options to repond to all high temperature applications in the market.

SISE proposes a detailed study of your projects on request. Custom applications are possible thanks to the know-how of our team.

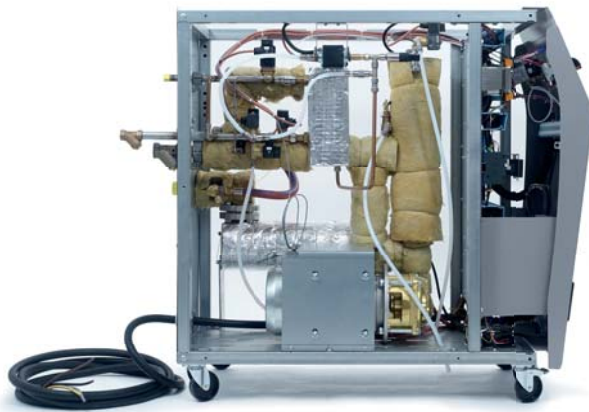
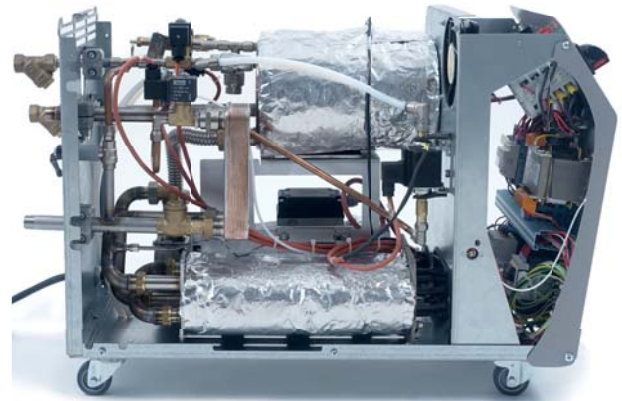


INDUSTRIAL PROCESS UNDER CONTROL



140/160E6-12E

- The new generation developed by SISE offers 2 systems from 140°C to 160°C. Heating power from 6 to 12 kW, with sealed peripheral or magnetically coupled 60 L/min pumps covers the entirety of markets applications. A booster pump comes standard on the 160°C is optional on the 140°C, for complementary water in the process without disturbing production. Equipped standard with a static relay and pressure gauge, they offer high precision temperature control, security and comfortable daily use. **2 year Warranty.**

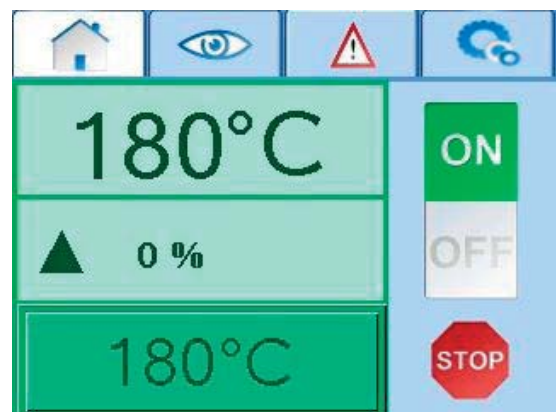


140E20-40-60E

- The 140°C range, available in 20 kW, 40 kW or 60 kW heating power, responds to applicable norms for pressurized equipment. It can be connected to large tools, notably for automotive applications, but also for chemistry and calendering. Its modular construction and robust components create a solid range that provides for easy maintenance. In addition to a number of important available options, it offers 3 pump types from 85 L/Min to 200 L/Min, and a pressure gauge comes standard. **2 year Warranty.**

180E20-40-60P

- This new generation of 180°C pressurized water temperature controllers was completely revamped, going from 20 to 60 kW heating power and up to 180 kW for cooling power. A new 90 L/min mechanically coupled pump and the integration of a new anti-tarter cooling system guarantee consistent operation and quality production. SISE has put emphasis on the new convivial and programmable colour touchscreen (possible to create a heating and cooling profile) with clear display of various alarms. The user is warned in real time of errors during production. **2 year Warranty.**



The ensemble of SISE pressurized water temperature controllers meet the directive of pressurized equipment (DESP)





TECHNICAL FEATURES WATER TEMPERATURE CONTROLLER

MODEL	140E 6/12 E			140E 20/40/60 E			160 6/12 E			180E 20/40/60 P		
Maximum Temperature °C	140						160			180		
Heating Capacity (kW)	6	12	20	40	60	6	12	20	40	60		
Heating Stages	1			2			1			2		
Pump Type	Sealed Peripheral			Peripheral with magnetic coupling								
Maximum Flow L/Min	60			85 - 150 - 200			60			85 - 150 - 200		
Maximum Pressure (bar)	6			7 - 7,5 - 8,5			6			7 - 7,5 - 8,5		
Cooling Technology	Heat Plate exchanger											
Cooling Power (kW) (Water 10°C - Maximum Process Temperature)	60			70			65			90		
Suction Mode (70°C max / Anti-Leak)	Oui			Non			Oui			Non		
Filling	Automatic						Automatic with booster pump					
Filling Volume	3,5	4	7,5	10	12,5	3,5	4	7,5	10	12,5		
Expansion Volume	2,5			2,5			2,5			Décharge automatique		
Process inlet / outlet	1/2"			1"			1/2"			1"		
Control and Regulation	MicroP - Self-Tuning									Automate / Touchscreen		
Voltage	400V-3Ph. + T - 50Hz											
Dimensions (mm) :												
Depth	840			1150			840			1150		
Width	330			446			330			446		
Height	540			976			540			976		
Weight kg (empty)	55 à 60			170 à 180			57 à 62			170 à 180		

OPTIONS

MODEL	140E 6/12 E			140E 20/40/60 E			160 6/12 E			180E 20/40 P		
PROCESS												
Pressure gauge	●			●			●			●		
Booster Pump	○			○			●			●		
Solid State Relays	●			○			●			-		
3-way valve "anti-fouling system"	○			○			○			●		
Remote Temperature Sensor	○			○			○			○		
Flowmeter	○			○			○			○		
Pseudo-Cascade Control	○			○			○			○		
(Air Pressure) Mold Cleaning	○			-			○			-		
Programmable cycle	-			-			-			○		
Security stop procedure	-			-			-			○		
COMMUNICATION												
Remote Alarm	○			○			○			○		
Remote Set Point & Copy Process T°C	○			○			○			○		
"Communication RS 485 / TTY / Modbus Profibus / SPI..."	○			○			○			○		
Remote Control	○			○			○			○		
AUXILIARY EQUIPMENT												
Manifold Multi - Inlets / Outlets	○			○			○			○		
LED Alarm Tower	○			○			○			○		
VARIOUS												
Lateral door color	○			○			○			○		
230V/440V/480V - 3Ph. + T - 60Hz	○			○			○			○		

●= Standard ○= Option - = not available

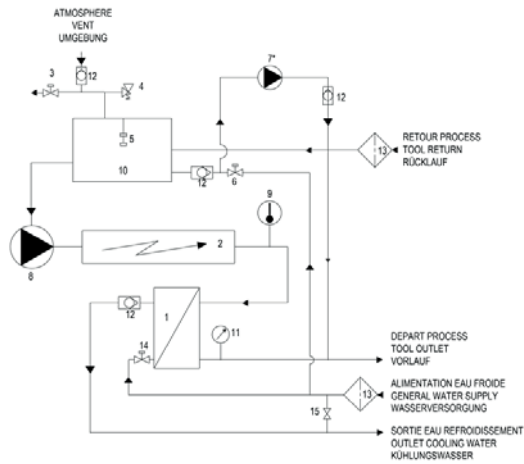




HYDRAULIC CIRCUIT :



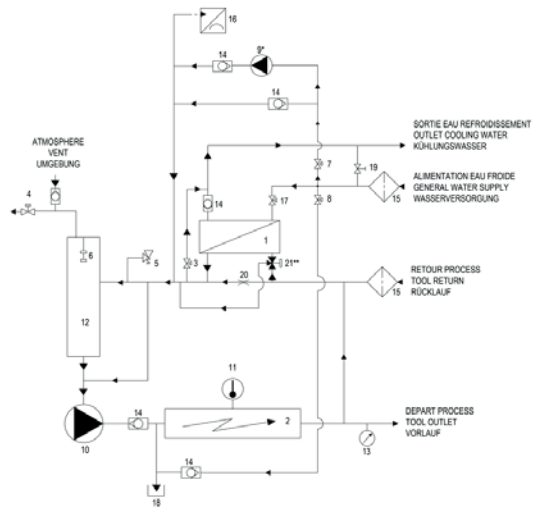
Type 140/160E6-12



- 1 - COOLING EXCHANGER
- 2 - HEATING ELEMENT
- 3 - PURGE SOLENOID VALVE
- 4 - SAFETY VALVE
- 5 - LEVEL SENSOR
- 6 - SOLENOID VALVE - FILING
- 7 - BOOSTER PUMP
- 8 - PUMP
- 9 - TEMPERATURE PROBE
- 10 - EXPANSION TANK
- 11 - PRESSURE GAUGE
- 12 - VACUUM BREAKER
- 13 - FILTER
- 14 - SOLENOID VALVE - COOLING
- 15 - MANUAL COOLING BY-PASS

* BOOSTER PUMP (IN OPTION ON 140E)

Type 140-180E20-40-60

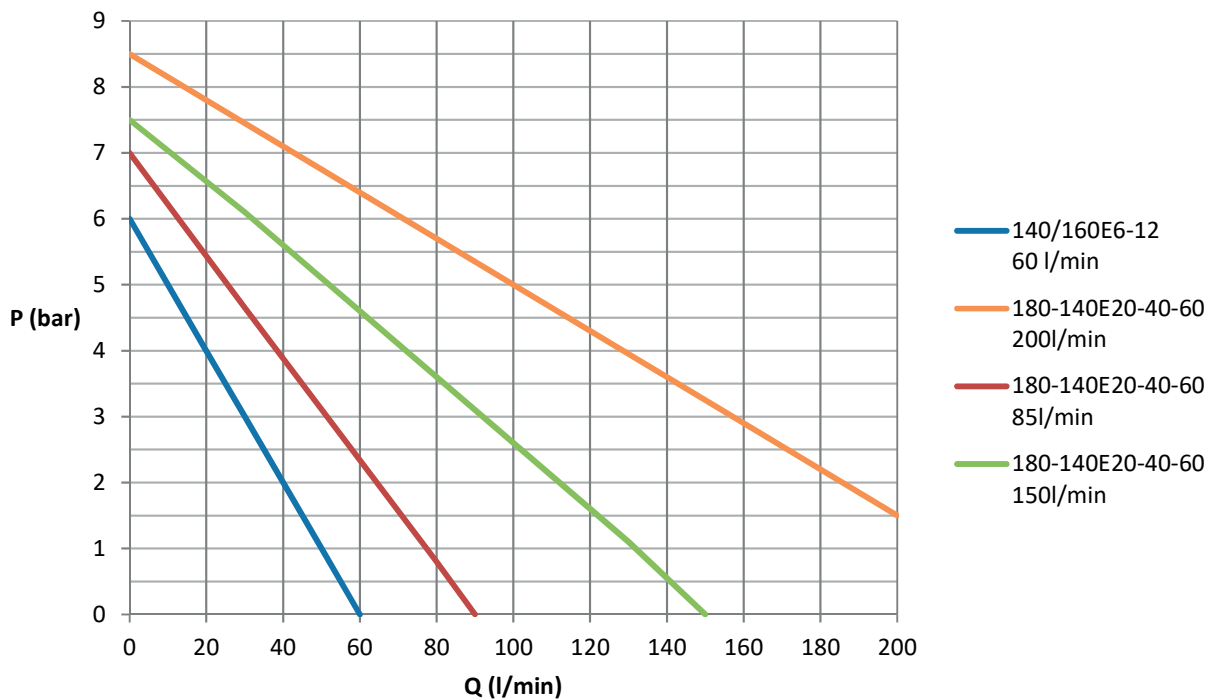


- 1 - COOLING EXCHANGER
- 2 - HEATING ELEMENT
- 3 - SOLENOID VALVE - OVERFLOW
- 4 - PURGE SOLENOID VALVE
- 5 - SAFETY VALVE
- 6 - LEVEL SENSOR
- 7 - SOLENOID VALVE - FILING
- 8 - SOLENOID VALVE HEATING ELEMENT - FILING
- 9 - BOOSTER PUMP
- 10 - PUMP
- 11 - TEMPERATURE PROBE
- 12 - EXPANSION TANK
- 13 - PRESSURE GAUGE
- 14 - CHECK VALVE
- 15 - FILTER
- 16 - ANALOG PRESSURE SENSOR
- 17 - SOLENOID VALVE - COOLING
- 18 - DRAIN
- 19 - MANUAL COOLING BY-PASS
- 20 - TROTTLING
- 21 - 3-WAYS VALVE

* BOOSTER PUMP (IN OPTION ON 140E)

** 3-WAYS VALVE (SERIES 180°C AND OPTIONAL 140°C)

PUMP PERFORMANCE :



SISE takes part regularly in training, assistance with start-up, or for existing installations

